

LXA Series

- Rated voltage range up to 525V_{dc}
- Endurance with ripple current : 5,000 hours at 105°C (2,000 hours for 500V_{dc} & 525V_{dc})
- High reliability products
- RoHS Compliant

LXA

Long life
KMH P270



SPECIFICATIONS

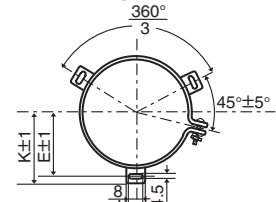
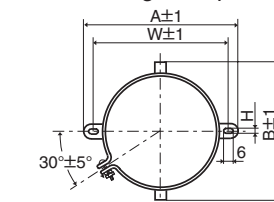
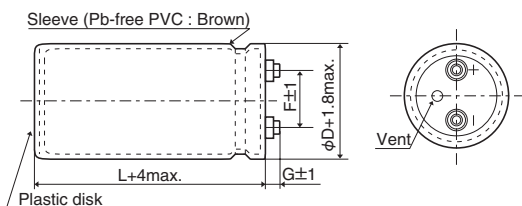
Items	Characteristics	
Category		
Temperature Range	-40 to +105°C (10 to 100V _{dc})	-25 to +105°C (160 to 525V _{dc})
Rated Voltage Range	10 to 525V _{dc}	
Capacitance Tolerance	-10 to +50% (T) (10 to 250V _{dc})	±20% (M) (350 to 525V _{dc}) (at 20°C, 120Hz)
Leakage Current	I=0.02CV or 5mA, whichever is smaller. Where, I : Max. leakage current (μA), C : Nominal capacitance (μF), V : Rated voltage (V) (at 20°C after 5 minutes)	
Dissipation Factor (tanδ)	See STANDARD RATINGS (10 to 250V _{dc})	0.20max (350 to 525V _{dc}) (at 20°C, 120Hz)
Low Temperature Characteristics	Capacitance change C(-40°C)/C(+20°C)≥0.6(10 to 100V _{dc}) C(-25°C)/C(+20°C)≥0.7(160 to 250V _{dc}) C(-25°C)/C(+20°C)≥0.65(350 to 525V _{dc}) (at 120Hz)	
Insulation Resistance	When measured between the terminals that are connected to each other and to the mounting clamp on the insulating sleeve covering the case by using an insulation resistance meter of 500V _{dc} , the insulation resistance shall not be less than 100MΩ.	
Insulation Withstanding Voltage	When a voltage of 2,000V _{ac} is applied for 1 minute between the terminals that are connected to each other and to the mounting clamp on the insulating sleeve covering the case, there shall not be electrical damage.	
Endurance	The following specifications shall be satisfied when the capacitors are restored to 20°C after subjected to DC voltage with the rated ripple current is applied (the peak voltage shall not exceed the rated voltage) for 5,000 hours (2,000 hours for 500 & 525V _{dc} products) at 105°C.	
	Capacitance change	≤±20% of the initial value
	D.F. (tanδ)	≤200% of the initial specified value
	Leakage current	≤The initial specified value
Shelf Life	The following specifications shall be satisfied when the capacitors are restored to 20°C after exposing them for 1,000 hours at 105°C without voltage applied. Before the measurement, the capacitor shall be preconditioned by applying voltage according to Item 4.1 of JIS C 5101-4.	
	Rated voltage	10 to 250V _{dc} 350 to 525V _{dc}
	Capacitance change	≤±15% of the initial value ≤±20% of the initial value
	D.F. (tanδ)	≤150% of the initial specified value ≤200% of the initial specified value
	Leakage current	≤The initial specified value ≤The initial specified value

DIMENSIONS (Screw-Mount) [mm]

Terminal Code : LG

Mounting Clamp Code : B

Mounting Clamp Code : C



φD	G	
	10 to 250V _{dc}	350 to 525V _{dc}
~φ63.5	6	6
φ76.2	5	6
φ89	5	4

φD	A	B	W	H	F
35	58	44	48	3.5	12.7
50	78	64	68	4.5	22.4
63.5	90	76	80	4.5	28.0
76.2	104.5	90	93.5	4.5	31.5

φD	E	K	J	F
50	32.5	37.0	14.0	22.4
63.5	38.1	43.5	14.0	28.0
76.2	44.5	50.0	14.0	31.5
89	50.8	56.5	16.0	31.5

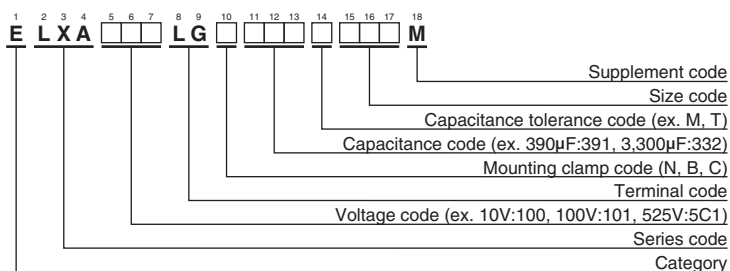
<Screw specifications>

Plus hexagon-headed screw : M5×0.8×10

Maximum screw tightening torque : 3.23Nm

* The screw and the mounting clamp are separately supplied and not attached to the product.

PART NUMBERING SYSTEM



Please refer to "Product code guide (screw-mount terminal type)"

◆STANDARD RATINGS

WV (Vdc)	Cap (μF)	Case size φD×L(mm)	tanδ	Rated ripple current (Arms/105°C,120Hz)	Part No.	WV (Vdc)	Cap (μF)	Case size φD×L(mm)	tanδ	Rated ripple current (Arms/105°C,120Hz)	Part No.	
10	27,000	35×80	0.45	4.30	ELXA100LGB273TA80M	50	10,000	35×80	0.25	3.70	ELXA500LGB103TA80M	
	33,000	35×80	0.45	4.70	ELXA100LGB333TA80M		12,000	35×100	0.25	4.40	ELXA500LGB123TAA0M	
	39,000	35×80	0.45	5.30	ELXA100LGB393TA80M		15,000	35×120	0.30	4.70	ELXA500LGB153TAC0M	
	47,000	35×100	0.45	6.10	ELXA100LGB473TAA0M		18,000	50×80	0.35	4.80	ELXA500LGC183TC80M	
	56,000	35×100	0.50	6.20	ELXA100LGB563TAA0M		22,000	50×100	0.35	5.90	ELXA500LGC223TCA0M	
	68,000	35×120	0.60	6.80	ELXA100LGB683TAC0M		27,000	50×120	0.35	7.00	ELXA500LGC273TCC0M	
	82,000	50×80	0.60	7.80	ELXA100LGC823TC80M		33,000	63.5×100	0.40	7.60	ELXA500LGC333TDA0M	
	100,000	50×100	0.70	8.50	ELXA100LGC104TCA0M		39,000	63.5×120	0.40	8.90	ELXA500LGC393TDC0M	
	120,000	50×100	0.70	9.50	ELXA100LGC124TCA0M		47,000	63.5×120	0.40	9.80	ELXA500LGC473TDC0M	
	150,000	63.5×100	0.80	11.0	ELXA100LGC154TDA0M		56,000	76.2×120	0.40	11.9	ELXA500LGC563TEC0M	
	180,000	63.5×100	0.80	12.1	ELXA100LGC184TDA0M		68,000	76.2×140	0.45	13.1	ELXA500LGC683TEE0M	
	220,000	76.2×100	1.00	13.2	ELXA100LGC224TEA0M		82,000	89×140	0.50	14.8	ELXA500LGC823TFE0M	
	270,000	76.2×120	1.20	14.4	ELXA100LGC274TEC0M		63	2,700	35×50	0.15	1.90	ELXA630LGB272TA50M
	330,000	76.2×140	1.20	17.0	ELXA100LGC334TEE0M			3,300	35×50	0.15	2.10	ELXA630LGB332TA50M
	390,000	89×140	1.40	18.6	ELXA100LGC394TFE0M			3,900	35×80	0.20	2.70	ELXA630LGB392TA80M
	16	15,000	35×50	0.45	2.90			ELXA160LGB153TA50M	4,700	35×80	0.20	2.90
18,000		35×80	0.45	3.50	ELXA160LGB183TA80M	5,600		35×80	0.20	3.20	ELXA630LGB562TA80M	
22,000		35×80	0.45	3.90	ELXA160LGB223TA80M	6,800		35×80	0.20	3.50	ELXA630LGB682TA80M	
27,000		35×80	0.45	4.30	ELXA160LGB273TA80M	8,200		35×100	0.20	4.20	ELXA630LGB822TAA0M	
33,000		35×100	0.50	4.80	ELXA160LGB333TAA0M	10,000		35×120	0.25	4.30	ELXA630LGB103TAC0M	
39,000		35×100	0.50	5.30	ELXA160LGB393TAA0M	12,000		50×80	0.25	4.80	ELXA630LGC123TC80M	
47,000		35×120	0.50	6.20	ELXA160LGB473TAC0M	15,000		50×100	0.25	5.90	ELXA630LGC153TCA0M	
56,000		50×80	0.60	6.30	ELXA160LGC563TC80M	18,000		50×120	0.25	6.30	ELXA630LGC183TCC0M	
68,000		50×100	0.60	7.60	ELXA160LGC683TCA0M	22,000		50×120	0.30	6.70	ELXA630LGC223TCC0M	
82,000		50×120	0.70	8.30	ELXA160LGC823TCC0M	27,000		63.5×120	0.30	8.80	ELXA630LGC273TDC0M	
100,000		50×120	0.70	9.20	ELXA160LGC104TCC0M	33,000		76.2×100	0.30	10.0	ELXA630LGC333TEA0M	
120,000		63.5×100	0.80	9.90	ELXA160LGC124TCA0M	39,000		76.2×120	0.35	10.7	ELXA630LGC393TEC0M	
150,000		76.2×100	0.80	12.3	ELXA160LGC154TEA0M	47,000		76.2×140	0.35	12.5	ELXA630LGC473TEE0M	
180,000		76.2×120	0.80	14.5	ELXA160LGC184TEC0M	56,000	89×140	0.40	13.8	ELXA630LGC563TFE0M		
220,000		76.2×140	1.00	15.2	ELXA160LGC224TEE0M	80	2,200	35×50	0.15	1.90	ELXA800LGB222TA50M	
270,000		89×140	1.20	16.8	ELXA160LGC274TFE0M		2,700	35×80	0.15	2.20	ELXA800LGB272TA80M	
25	12,000	35×80	0.35	3.30	ELXA250LGB123TA80M		3,300	35×80	0.15	2.50	ELXA800LGB332TA80M	
	15,000	35×80	0.35	3.70	ELXA250LGB153TA80M		3,900	35×80	0.15	2.90	ELXA800LGB392TA80M	
	18,000	35×80	0.35	4.00	ELXA250LGB183TA80M		4,700	35×100	0.15	3.10	ELXA800LGB472TAA0M	
	22,000	35×80	0.35	4.50	ELXA250LGB223TA80M		5,600	35×100	0.15	3.50	ELXA800LGB562TAA0M	
	27,000	35×100	0.40	5.00	ELXA250LGB273TAA0M		6,800	35×120	0.20	4.10	ELXA800LGB682TAC0M	
	33,000	35×120	0.40	5.90	ELXA250LGB333TAC0M		8,200	50×80	0.20	4.80	ELXA800LGC822TC80M	
	39,000	50×80	0.40	6.50	ELXA250LGC393TC80M		10,000	50×100	0.20	5.60	ELXA800LGC103TCA0M	
	47,000	50×100	0.40	7.90	ELXA250LGC473TCA0M		12,000	50×100	0.20	6.10	ELXA800LGC123TCA0M	
	56,000	50×120	0.40	8.80	ELXA250LGC563TCC0M		15,000	50×120	0.20	7.40	ELXA800LGC153TCC0M	
	68,000	50×120	0.50	9.10	ELXA250LGC683TCC0M		18,000	63.5×120	0.25	8.00	ELXA800LGC183TDC0M	
	82,000	63.5×100	0.50	10.6	ELXA250LGC823TDA0M		22,000	76.2×100	0.25	9.10	ELXA800LGC223TEA0M	
	100,000	63.5×120	0.60	11.4	ELXA250LGC104TDC0M		27,000	76.2×120	0.30	9.70	ELXA800LGC273TEC0M	
	120,000	76.2×100	0.60	12.8	ELXA250LGC124TEA0M		33,000	76.2×140	0.30	11.5	ELXA800LGC333TEE0M	
	150,000	76.2×120	0.75	13.7	ELXA250LGC154TEC0M		39,000	89×140	0.35	12.5	ELXA800LGC393TFE0M	
	180,000	76.2×140	0.75	16.1	ELXA250LGC184TEE0M	100	1,200	35×50	0.15	1.40	ELXA101LGB122TA50M	
	220,000	89×140	1.00	16.6	ELXA250LGC224TFE0M		1,500	35×80	0.15	1.60	ELXA101LGB152TA80M	
35	8,200	35×80	0.30	3.00	ELXA350LGB822TA80M		1,800	35×80	0.15	1.80	ELXA101LGB182TA80M	
	10,000	35×80	0.30	3.30	ELXA350LGB103TA80M		2,200	35×80	0.15	2.00	ELXA101LGB222TA80M	
	12,000	35×80	0.30	3.60	ELXA350LGB123TA80M		2,700	35×80	0.15	2.40	ELXA101LGB272TA80M	
	15,000	35×80	0.30	4.10	ELXA350LGB153TA80M		3,300	35×100	0.15	2.80	ELXA101LGB332TAA0M	
	18,000	35×100	0.30	4.80	ELXA350LGB183TAA0M		3,900	35×120	0.15	3.10	ELXA101LGB392TAC0M	
	22,000	35×120	0.35	5.20	ELXA350LGB223TAC0M		4,700	50×80	0.15	3.60	ELXA101LGC472TC80M	
	27,000	50×80	0.40	5.90	ELXA350LGC273TC80M		5,600	50×100	0.15	4.30	ELXA101LGC562TCA0M	
	33,000	50×100	0.40	6.60	ELXA350LGC333TCA0M		6,800	50×120	0.15	5.00	ELXA101LGC682TCC0M	
	39,000	50×120	0.40	7.80	ELXA350LGC393TCC0M		8,200	50×120	0.15	5.50	ELXA101LGC822TCC0M	
	47,000	50×120	0.45	8.00	ELXA350LGC473TCC0M		10,000	63.5×100	0.15	6.40	ELXA101LGC103TDA0M	
	56,000	63.5×100	0.45	9.20	ELXA350LGC563TDA0M		12,000	63.5×120	0.20	6.60	ELXA101LGC123TDC0M	
	68,000	63.5×120	0.45	11.0	ELXA350LGC683TDC0M		15,000	76.2×100	0.20	7.50	ELXA101LGC153TEA0M	
	82,000	76.2×120	0.50	12.7	ELXA350LGC823TEC0M		18,000	76.2×120	0.25	8.00	ELXA101LGC183TEC0M	
	100,000	76.2×140	0.60	13.5	ELXA350LGC104TEE0M		22,000	76.2×140	0.25	9.40	ELXA101LGC223TFE0M	
	120,000	89×140	0.60	16.1	ELXA350LGC124TFE0M	27,000	89×140	0.30	10.4	ELXA101LGC273TFE0M		
	50	3,900	35×50	0.20	2.00	ELXA500LGB392TA50M	160	680	35×50	0.15	1.10	ELXA161LGB681TA50M
4,700		35×50	0.25	2.20	ELXA500LGB472TA50M	820		35×80	0.15	1.20	ELXA161LGB821TA80M	
5,600		35×80	0.25	2.80	ELXA500LGB562TA80M	1,000		35×80	0.15	1.30	ELXA161LGB102TA80M	
6,800		35×80	0.25	3.00	ELXA500LGB682TA80M	1,200		35×80	0.15	1.50	ELXA161LGB122TA80M	
8,200		35×80	0.25	3.30	ELXA500LGB822TA80M	1,500		35×80	0.15	1.70	ELXA161LGB152TA80M	

◆STANDARD RATINGS

WV (Vdc)	Cap (μF)	Case size φD×L(mm)	tanδ	Rated ripple current (Arms/105°C,120Hz)	Part No.	WV (Vdc)	Cap (μF)	Case size φD×L(mm)	tanδ	Rated ripple current (Arms/105°C,120Hz)	Part No.	
160	1,800	35×100	0.15	2.00	ELXA161LGB182TAA0M	400	680	50×60	0.20	3.00	ELXA401LGC681MC60M	
	2,200	35×120	0.15	2.30	ELXA161LGB222TAC0M		1,200	50×85	0.20	4.70	ELXA401LGC122MC85M	
	2,700	35×120	0.15	2.70	ELXA161LGB272TAC0M		1,800	50×105	0.20	6.30	ELXA401LGC182MCA5M	
	3,300	50×100	0.15	3.30	ELXA161LGC332TCA0M		2,200	50×125	0.20	7.50	ELXA401LGC222MCC5M	
	3,900	50×120	0.15	3.80	ELXA161LGC392TCC0M		2,200	63.5×85	0.20	7.30	ELXA401LGC222MD85M	
	4,700	50×120	0.15	4.20	ELXA161LGC472TCC0M		2,700	50×145	0.20	8.90	ELXA401LGC272MCE5M	
	5,600	50×120	0.15	4.70	ELXA161LGC562TCC0M		2,700	63.5×105	0.20	8.80	ELXA401LGC272MDA5M	
	6,800	63.5×120	0.15	5.70	ELXA161LGC682TDC0M		3,300	63.5×125	0.20	10.5	ELXA401LGC332MDC5M	
	8,200	76.2×100	0.20	6.40	ELXA161LGC822TEA0M		3,300	76.2×85	0.20	9.90	ELXA401LGC332ME85M	
	10,000	76.2×120	0.20	6.60	ELXA161LGC103TEC0M		4,700	63.5×145	0.20	13.4	ELXA401LGC472MCE5M	
	12,000	76.2×140	0.20	7.80	ELXA161LGC123TEE0M		4,700	76.2×125	0.20	13.9	ELXA401LGC472MEC5M	
	15,000	89×140	0.20	9.50	ELXA161LGC153TFE0M		6,800	76.2×145	0.20	17.9	ELXA401LGC682MEE5M	
	200	470	35×50	0.15	0.90		ELXA201LGB471TA50M	6,800	89×125	0.20	17.2	ELXA401LGC682MFC5M
		560	35×80	0.15	1.00		ELXA201LGB561TA80M	8,200	76.2×190	0.20	20.8	ELXA401LGC822MEK0M
680		35×80	0.15	1.10	ELXA201LGB681TA80M	8,200	89×145	0.20	20.1	ELXA401LGC822MFE5M		
820		35×80	0.15	1.30	ELXA201LGB821TA80M	12,000	89×190	0.20	27.4	ELXA401LGC123MFK0M		
1,000		35×100	0.15	1.50	ELXA201LGB102TAA0M	18,000	89×270	0.20	39.4	ELXA401LGC183MFT0M		
1,200		35×120	0.15	1.70	ELXA201LGB122TAC0M	450	560	50×60	0.20	2.60	ELXA451LGC561MC60M	
1,500		35×120	0.15	1.90	ELXA201LGB152TAC0M		1,000	50×85	0.20	4.00	ELXA451LGC102MC85M	
1,800		50×80	0.15	2.20	ELXA201LGC182TC80M		1,200	50×105	0.20	4.80	ELXA451LGC122MCA5M	
2,200		50×100	0.15	2.70	ELXA201LGC222TCA0M		1,800	50×125	0.20	6.40	ELXA451LGC182MCC5M	
2,700		50×120	0.15	3.20	ELXA201LGC272TCC0M		1,800	63.5×85	0.20	6.20	ELXA451LGC182MD85M	
3,300		50×120	0.15	3.50	ELXA201LGC332TCC0M		2,200	50×145	0.20	7.60	ELXA451LGC222MCE5M	
3,900		63.5×100	0.15	4.00	ELXA201LGC392TDA0M		2,200	63.5×105	0.20	7.50	ELXA451LGC222MDA5M	
4,700		63.5×120	0.15	4.70	ELXA201LGC472TDC0M		2,700	63.5×125	0.20	8.90	ELXA451LGC272MDC5M	
5,600		76.2×100	0.15	5.30	ELXA201LGC562TEA0M		2,700	76.2×85	0.20	8.40	ELXA451LGC272ME85M	
6,800	76.2×120	0.15	6.30	ELXA201LGC682TEC0M	3,300		63.5×145	0.20	10.6	ELXA451LGC332MCE5M		
8,200	76.2×140	0.20	6.40	ELXA201LGC822TEE0M	3,300		76.2×105	0.20	10.2	ELXA451LGC332MEA5M		
10,000	89×140	0.20	7.70	ELXA201LGC103TFE0M	3,900		76.2×125	0.20	11.9	ELXA451LGC392MEC5M		
250	330	35×50	0.15	0.70	ELXA251LGB331TA50M		4,700	76.2×145	0.20	14.0	ELXA451LGC472MEE5M	
	390	35×80	0.15	0.80	ELXA251LGB391TA80M		5,600	89×125	0.20	14.2	ELXA451LGC562MFC5M	
	470	35×80	0.15	0.90	ELXA251LGB471TA80M	6,800	76.2×190	0.20	17.3	ELXA451LGC682MEK0M		
	560	35×80	0.15	1.00	ELXA251LGB561TA80M	6,800	89×145	0.20	16.7	ELXA451LGC682MFE5M		
	680	35×100	0.15	1.20	ELXA251LGB681TAA0M	10,000	89×190	0.20	22.8	ELXA451LGC103MFK0M		
	820	35×100	0.15	1.40	ELXA251LGB821TAA0M	15,000	89×270	0.20	32.8	ELXA451LGC153MFT0M		
	1,000	35×120	0.15	1.60	ELXA251LGB102TAC0M	500	470	50×60	0.20	2.40	ELXA501LGC471MC60M	
	1,200	50×80	0.15	1.80	ELXA251LGC122TC80M		820	50×85	0.20	3.60	ELXA501LGC821MC85M	
	1,500	50×100	0.15	2.20	ELXA251LGC152TCA0M		1,000	50×105	0.20	4.40	ELXA501LGC102MCA5M	
	1,800	50×120	0.15	2.60	ELXA251LGC182TCC0M		1,200	50×125	0.20	5.20	ELXA501LGC122MCC5M	
	2,200	50×120	0.15	2.80	ELXA251LGC222TCC0M		1,200	63.5×85	0.20	5.00	ELXA501LGC122MD85M	
	2,700	63.5×100	0.15	3.30	ELXA251LGC272TDA0M		1,500	50×145	0.20	6.30	ELXA501LGC152MCE5M	
	3,300	63.5×120	0.15	4.00	ELXA251LGC332TDC0M		1,800	63.5×105	0.20	6.80	ELXA501LGC182MDA5M	
	3,900	76.2×100	0.15	4.40	ELXA251LGC392TEA0M		2,700	63.5×145	0.20	9.60	ELXA501LGC272MDE5M	
4,700	76.2×120	0.15	5.20	ELXA251LGC472TEC0M	2,700		76.2×105	0.20	9.20	ELXA501LGC272MEA5M		
5,600	76.2×140	0.15	6.10	ELXA251LGC562TEE0M	3,900		76.2×145	0.20	12.7	ELXA501LGC392MEE5M		
6,800	89×140	0.15	7.40	ELXA251LGC682TFE0M	3,900		89×125	0.20	11.9	ELXA501LGC392MFC5M		
350	820	50×60	0.20	3.30	ELXA351LGC821MC60M		6,800	89×190	0.20	18.8	ELXA501LGC682MFK0M	
	1,500	50×85	0.20	5.20	ELXA351LGC152MC85M		10,000	89×270	0.20	26.8	ELXA501LGC103MFT0M	
	2,200	50×105	0.20	7.00	ELXA351LGC222MCA5M		525	390	50×60	0.20	2.20	ELXA5C1LGC391MC60M
	2,700	50×125	0.20	8.40	ELXA351LGC272MCC5M	680		50×85	0.20	3.30	ELXA5C1LGC681MC85M	
	2,700	63.5×85	0.20	8.10	ELXA351LGC272MD85M	1,000		50×125	0.20	4.80	ELXA5C1LGC102MCC5M	
	3,300	50×145	0.20	9.90	ELXA351LGC332MCE5M	1,500		63.5×105	0.20	6.20	ELXA5C1LGC152MDA5M	
	3,300	63.5×105	0.20	9.80	ELXA351LGC332MDA5M	1,800		63.5×125	0.20	7.30	ELXA5C1LGC182MDC5M	
	3,900	63.5×125	0.20	11.5	ELXA351LGC392MDC5M	2,200		63.5×145	0.20	8.60	ELXA5C1LGC222MDE5M	
	3,900	76.2×85	0.20	10.8	ELXA351LGC392ME85M	2,200		76.2×105	0.20	8.30	ELXA5C1LGC222MEA5M	
	5,600	63.5×145	0.20	14.7	ELXA351LGC562MDE5M	2,700		76.2×125	0.20	9.90	ELXA5C1LGC272MEC5M	
	6,800	76.2×125	0.20	16.8	ELXA351LGC682MEC5M	3,300		76.2×145	0.20	11.7	ELXA5C1LGC332MEE5M	
	8,200	76.2×145	0.20	19.6	ELXA351LGC822MEE5M	4,700		76.2×190	0.20	14.4	ELXA5C1LGC472MEK0M	
	8,200	89×125	0.20	18.9	ELXA351LGC822MFC5M	4,700		89×145	0.20	13.9	ELXA5C1LGC472MFE5M	
	10,000	76.2×190	0.20	23.0	ELXA351LGC103MEK0M	5,600		89×190	0.20	17.1	ELXA5C1LGC562MFK0M	
10,000	89×145	0.20	22.2	ELXA351LGC103MFE5M								
15,000	89×190	0.20	30.6	ELXA351LGC153MFK0M								
22,000	89×270	0.20	43.5	ELXA351LGC223MFT0M								



LXA Series

◆RATED RIPPLE CURRENT MULTIPLIERS

●Frequency Multipliers

Frequency (Hz)	50	120	300	1k	3k	10k	50k
10 to 50V _{dc}	0.95	1.00	1.03	1.05	—	1.09	1.12
63 to 80V _{dc}	0.90	1.00	1.06	1.10	—	1.18	1.22
100 to 250V _{dc}	0.80	1.00	1.12	1.22	—	1.30	1.33
350 to 525V _{dc}	0.80	1.00	1.20	1.50	1.60	—	—

Note : The endurance of capacitors is reduced with internal heating produced by ripple current at the rate of halving the lifetime with every 5 to 10°C rise. When long life performance is requested in actual use, the rms ripple current has to be reduced. Also, for the LXA series capacitors (350 to 525V_{dc} products), using them at operating voltage can extend their lifetime. For details, please contact a representative of Nippon Chemi-con.